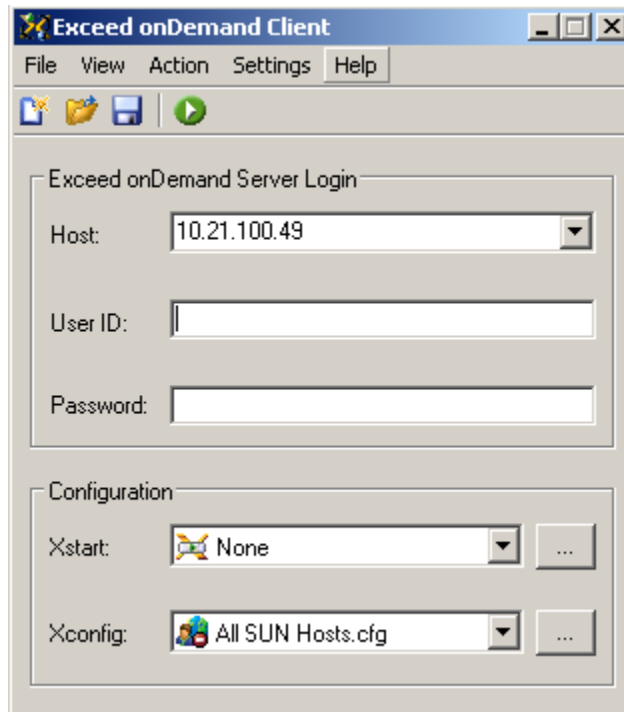


Instructions for connecting to the Sun Workstations Using the EOD Client.

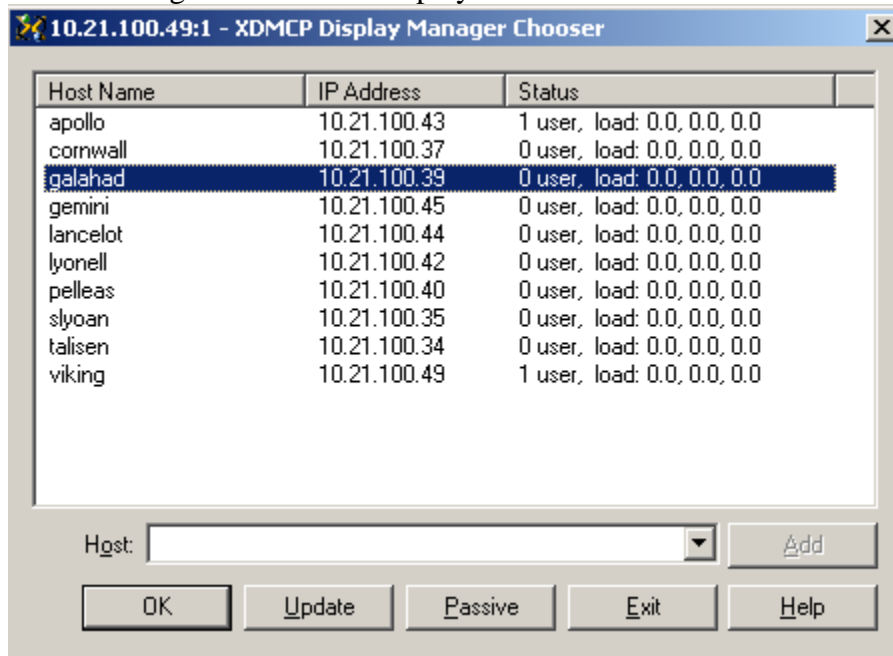
1. The Exceed on Demand (EOD) client (version 6) is currently installed on all workstations in the Old Union labs. There should be an icon on the desktop.
2. If you are working from home, the client can be downloaded and installed from the T: drive (<\\itksrv1\progs>) in the folder named \exceed. During the installation, have the installer place an icon on your desktop for easy access. Also if you are working from home, the Cisco VPN utility must be running. This utility is available from the ISU Computer Help Desk website (<http://www.ilstu.edu/helpdesk>) in the downloads section.
3. Double click on the **Exceed on Demand Client** icon on your desktop. The following dialog box will open:



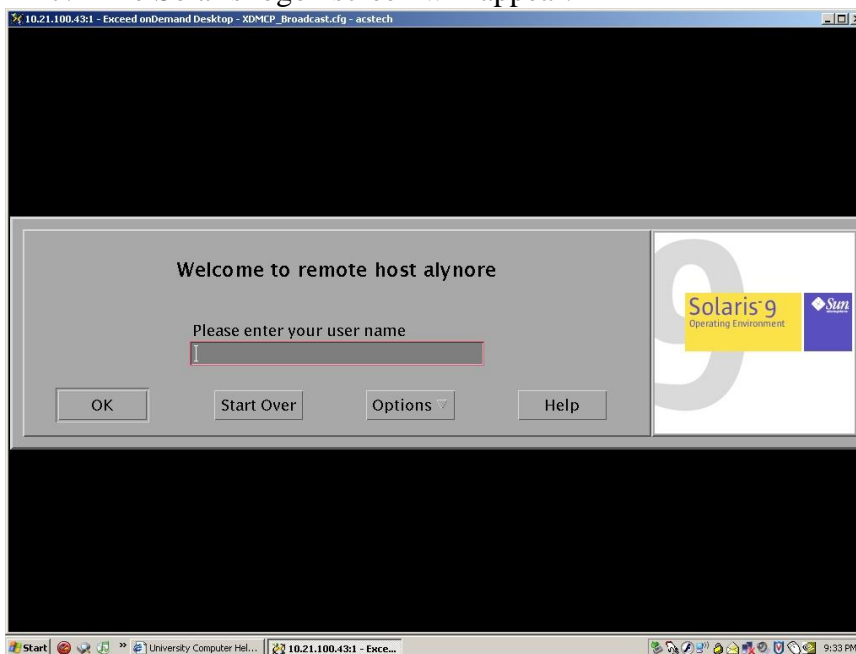
For host name enter **10.21.100.49**.

4. Enter your Sun credentials (User ID and Password) in the spaces provided. In the Xconfig selection box, choose “All SUN Hosts” and then click on the green arrow at the top of the dialog box.

5. The following screen will be displayed.



6. Select one of the available hosts from the list (with the exception of Viking). The status column shows the current load of each Sun workstation. A lower user count and load may result in a faster user experience. Once a host is selected click **OK**.
7. The Solaris logon screen will appear.



8. When finished close your session by logging out and then choosing exit on the XDMCP screen.